

PROJ. NO:

DESTROY ALL PRINTS PREVIOUS TO

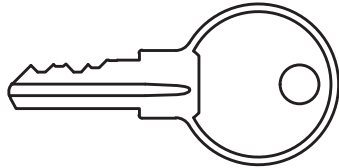
PART NO:

DC655XXS

REV.
NO.

3/11/2015

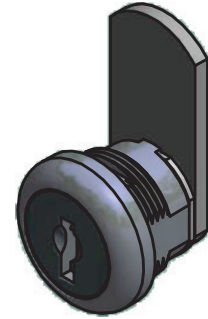
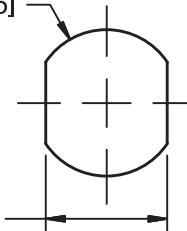
LOCK COMES STANDARD WITH TWO
NICKEL-PLATED BRASS KEYS
ILC KEYBLANK = C610-KEYBLANKS



RECOMMENDED APPLICATION HOLE SIZE

$\varnothing .760 \pm 0.002$ [19.30 ± 0.05]

$.633 \begin{matrix} +0.003 \\ -0.000 \end{matrix}$ [16.08 $\begin{matrix} +0.08 \\ -0.00 \end{matrix}$]



US26: BRIGHT CHROME
BLACK E-COAT (OPTIONAL)
US15: BRIGHT NICKEL (OPTIONAL)

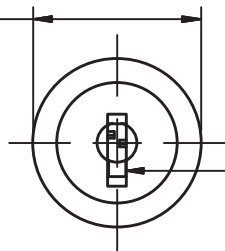
DIMENSION FROM BACK
OF LOCK HEAD TO FORMED CAM FACE
VARIES BY CAM OFFSET DIMENSION

$.375 \begin{matrix} +0.040 \\ -0.000 \end{matrix}$ [9.53 $\begin{matrix} +1.02 \\ -0.00 \end{matrix}$]

DIMENSION TO STRAIGHT
CAM FACE

$.20$ [5.08]

$\varnothing .88$ [22.23]

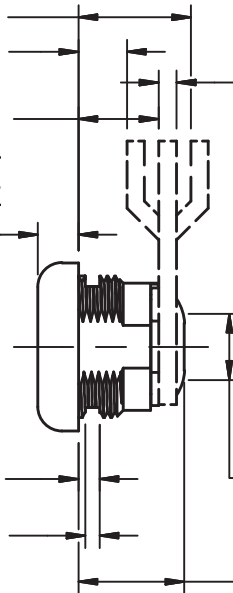


ILC 163B
KEYWAY

$.110 \pm 0.005$ [2.80 ± 0.13]

$.075 \pm 0.005$ [1.90 ± 0.13]

STANDARD CLIP ILCPN: HS6397
WILL FIT STANDARD GAUGE APPLICATIONS
.025" [.64] TO .05" [1.27] THICK



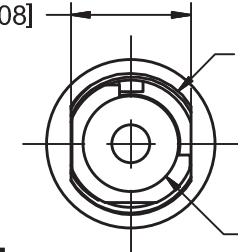
$.090 \pm 0.005$ [2.29 ± 0.13]
STANDARD MEDIUM-DUTY
CAM

$.625 \pm 0.003$ [15.88 ± 0.08]
BARREL FLATS

$.346 \begin{matrix} +0.000 \\ -0.003 \end{matrix}$ [8.79 $\begin{matrix} +0.00 \\ -0.08 \end{matrix}$]

SQ. CAM BOSS

$.55$ [13.99]



M19 X 1.00mm
BARREL THREADS

FIXED CAM

THIS DRAWING IS THE EXCLUSIVE PROPERTY OF THE ILLINOIS LOCK COMPANY / CCL SECURITY PRODUCTS, AND IS SUBMITTED ONLY ON A CONFIDENTIAL BASIS. UNAUTHORIZED USE OR DISCLOSURE OF ITS CONTENTS AND REPRODUCTION IS PROHIBITED. THIS DRAWING, UNLESS OTHERWISE DIRECTED IS TO BE RETURNED TO THE ILLINOIS LOCK COMPANY / CCL SECURITY PRODUCTS.

Illinois Lock Company

CCL SECURITY PRODUCTS

WHEELING, IL.

MATERIAL: ZINC, STEEL, BRASS

TOLERANCES, UNLESS OTHERWISE SPECIFIED

VALUE	INCHES [mm]
X	± .030 [.762]
X.X	± .015 [.381]
X.XX	± .010 [.254]
X.XXX	± .005 [.127]
FRACTIONS: ± 1/32	ANGLES: ± 2°

FINISH SPECS: STANDARD - US26: BRIGHT CHROME

X

ENG: JAI

SCALE: 1 : 1

X.X

CHECKED BY:

DATE: 2/11/2015

X.XXX

FRACTIONS: ± 1/32 ANGLES: ± 2°

CUST. NAME:

DC655XXS

CUST. PART NO:

SHEET: 1 OF 10