

PROJ. NO:

DESTROY ALL PRINTS PREVIOUS TO

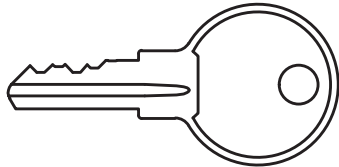
PART NO:

DC655XS

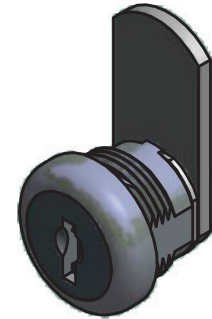
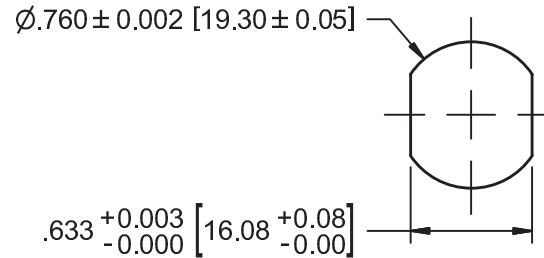
REV.  
NO.

3/11/2015

LOCK COMES STANDARD WITH TWO  
NICKEL-PLATED BRASS KEYS  
ILC KEYBLANK = C610-KEYBLANKS



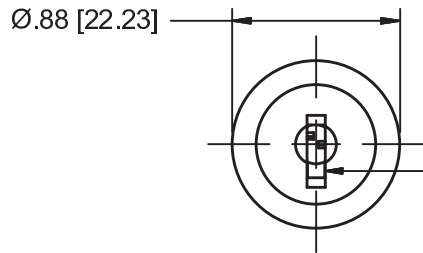
RECOMMENDED APPLICATION HOLE SIZE



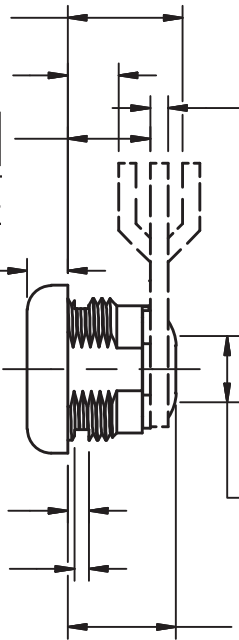
US26: BRIGHT CHROME  
BLACK E-COAT (OPTIONAL)  
US15: BRIGHT NICKEL (OPTIONAL)

DIMENSION FROM BACK  
OF LOCK HEAD TO FORMED CAM FACE  
VARIES BY CAM OFFSET DIMENSION

$.438^{+0.040}_{-0.000} [11.13^{+1.02}_{-0.00}]$   
DIMENSION TO STRAIGHT  
CAM FACE



.20 [5.08]  
.110 ± 0.005 [2.80 ± 0.13]  
.075 ± 0.005 [1.90 ± 0.13]  
STANDARD CLIP ILCPN: HS6397  
WILL FIT STANDARD GAUGE APPLICATIONS  
.025" [.64] TO .05" [1.27] THICK

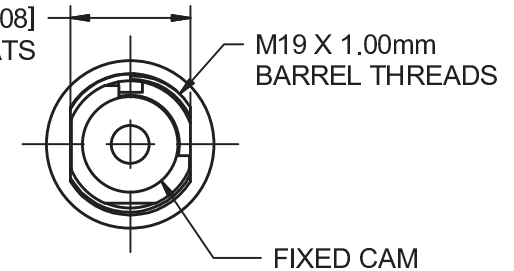


$.090 \pm 0.005 [2.29 \pm 0.13]$   
STANDARD MEDIUM-DUTY  
CAM

$.625 \pm 0.003 [15.88 \pm 0.08]$   
BARREL FLATS

$.346^{+0.000}_{-0.003} [8.79^{+0.00}_{-0.08}]$   
SQ. CAM BOSS

.61 [15.60]



THIS DRAWING IS THE EXCLUSIVE PROPERTY OF THE ILLINOIS LOCK COMPANY / CCL SECURITY PRODUCTS, AND IS SUBMITTED ONLY ON A CONFIDENTIAL BASIS. UNAUTHORIZED USE OR DISCLOSURE OF ITS CONTENTS AND REPRODUCTION IS PROHIBITED. THIS DRAWING, UNLESS OTHERWISE DIRECTED IS TO BE RETURNED TO THE ILLINOIS LOCK COMPANY / CCL SECURITY PRODUCTS.

**Illinois Lock Company**

**CCL SECURITY PRODUCTS**

WHEELING, IL.

MATERIAL: ZINC, STEEL, BRASS

TOLERANCES, UNLESS OTHERWISE SPECIFIED

FINISH SPECS: STANDARD - US26: BRIGHT CHROME

VALUE	INCHES [ mm ]
X.	± .030 [ .762 ]
X.X	± .015 [ .381 ]
X.XX	± .010 [ .254 ]
X.XXX	± .005 [ .127 ]
FRACTIONS: ± 1/32	ANGLES: ± 2°

ENG: JAI

SCALE: 1 : 1

CHECKED BY:

DATE: 2/11/2015

DC655XS

CUST. NAME:

CUST. PART NO:

SHEET: 2 OF 10