

PROJ. NO:

DESTROY ALL PRINTS PREVIOUS TO

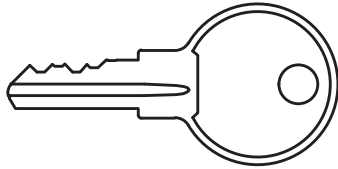
PART NO:

DC651S

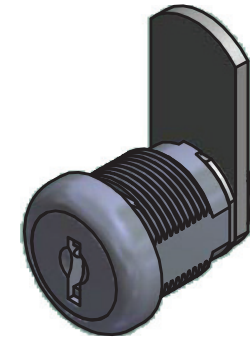
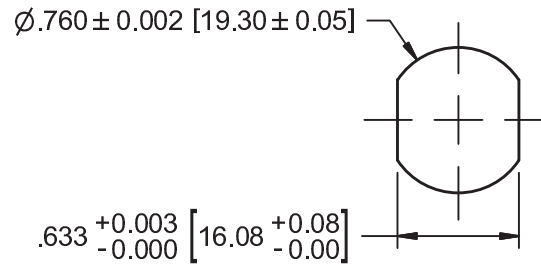
REV.  
NO.

3/11/2015

LOCK COMES STANDARD WITH TWO  
NICKEL-PLATED BRASS KEYS  
ILC KEYBLANK = C610-KEYBLANKS



RECOMMENDED APPLICATION HOLE SIZE



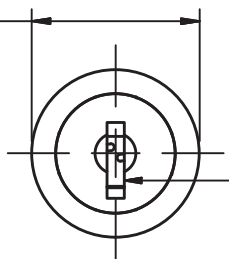
US26: BRIGHT CHROME  
BLACK E-COAT (OPTIONAL)  
US15: BRIGHT NICKEL (OPTIONAL)

DIMENSION FROM BACK  
OF LOCK HEAD TO FORMED CAM FACE  
VARIES BY CAM OFFSET DIMENSION

$.667 \begin{smallmatrix} +0.040 \\ -0.000 \end{smallmatrix} [16.95 \begin{smallmatrix} +1.02 \\ -0.00 \end{smallmatrix}]$

DIMENSION TO STRAIGHT  
CAM FACE

$\phi .88 [22.23]$



ILC 163B  
KEYWAY

$.20 [5.08]$

$.090 \pm 0.005 [2.29 \pm 0.13]$   
STANDARD MEDIUM-DUTY  
CAM

$.625 \pm 0.003 [15.88 \pm 0.08]$   
BARREL FLATS

$\phi 5/16 - 28$   
[7.94 - .907]  
CAM MOUNT  
NUT THREADS

M19 X 1.00mm  
BARREL THREADS

$.110 \pm 0.005 [2.80 \pm 0.13]$

$.075 \pm 0.005 [1.90 \pm 0.13]$

STANDARD CLIP ILCPN: HS6397  
WILL FIT STANDARD GAUGE APPLICATIONS  
.025" [.64] TO .05" [1.27] THICK

NUT MOUNTED  
CAM

$.94 [23.93]$

$.346 \begin{smallmatrix} +0.000 \\ -0.003 \end{smallmatrix} [8.79 \begin{smallmatrix} +0.00 \\ -0.08 \end{smallmatrix}]$   
SQ. CAM BOSS

THIS DRAWING IS THE EXCLUSIVE PROPERTY OF THE ILLINOIS LOCK COMPANY / CCL SECURITY PRODUCTS, AND IS SUBMITTED ONLY ON A CONFIDENTIAL BASIS. UNAUTHORIZED USE OR DISCLOSURE OF ITS CONTENTS AND REPRODUCTION IS PROHIBITED. THIS DRAWING, UNLESS OTHERWISE DIRECTED IS TO BE RETURNED TO THE ILLINOIS LOCK COMPANY / CCL SECURITY PRODUCTS.

**Illinois Lock Company**

**CCL SECURITY PRODUCTS**

WHEELING, IL.

MATERIAL: ZINC, STEEL, BRASS

TOLERANCES, UNLESS OTHERWISE SPECIFIED

| VALUE                 | INCHES [ mm ]         |
|-----------------------|-----------------------|
| X                     | $\pm .030 [ .762 ]$   |
| X.X                   | $\pm .015 [ .381 ]$   |
| X.XX                  | $\pm .010 [ .254 ]$   |
| X.XXX                 | $\pm .005 [ .127 ]$   |
| FRACTIONS: $\pm 1/32$ | ANGLES: $\pm 2^\circ$ |

FINISH SPECS: STANDARD - US26: BRIGHT CHROME

X

ENG: JAI

SCALE: 1 : 1

X.X

CHECKED BY:

DATE: 2/11/2015

X.XX

FRACTIONS:  $\pm 1/32$  ANGLES:  $\pm 2^\circ$

DC651S

CUST. NAME:

CUST. PART NO:

SHEET: 5 OF 10