

PROJ. NO:

DESTROY ALL PRINTS PREVIOUS TO

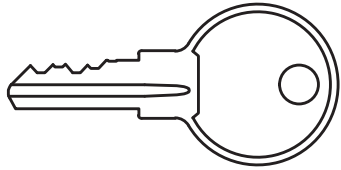
PART NO:

DC650S

REV.
NO.

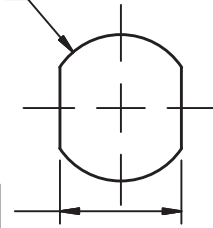
3/11/2015

LOCK COMES STANDARD WITH TWO
NICKEL-PLATED BRASS KEYS
ILC KEYBLANK = C610-KEYBLANKS

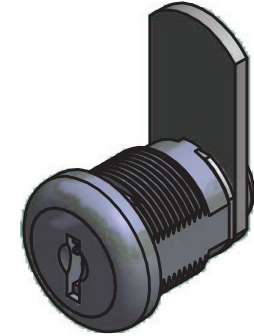


RECOMMENDED APPLICATION HOLE SIZE

$\varnothing .760 \pm 0.002$ [19.304 \pm 0.051]



$.633^{+0.003}_{-0.000}$ [16.078 $^{+0.08}_{-0.00}$]



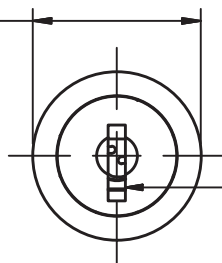
US26: BRIGHT CHROME
BLACK E-COAT (OPTIONAL)
US15: BRIGHT NICKEL (OPTIONAL)

DIMENSION FROM BACK
OF LOCK HEAD TO FORMED CAM FACE
VARIES BY CAM OFFSET DIMENSION

$.625^{+0.040}_{-0.000}$ [15.88 $^{+1.02}_{-0.00}$]

DIMENSION TO STRAIGHT
CAM FACE

$\varnothing .88$ [22.23]



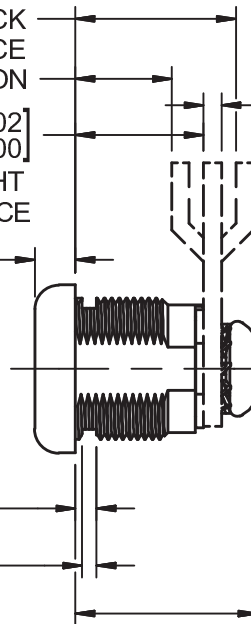
ILC 163B
KEYWAY

.20 [5.08]

$.110 \pm 0.005$ [2.80 \pm 0.13]

$.075 \pm 0.005$ [1.90 \pm 0.13]

STANDARD CLIP ILCPN: HS6397
WILL FIT STANDARD GAUGE APPLICATIONS
.025" [.64] TO .05" [1.27] THICK



$.090 \pm 0.005$ [2.29 \pm 0.13]
STANDARD MEDIUM-DUTY
CAM

$.625 \pm 0.003$ [15.88 \pm 0.08]
BARREL FLATS

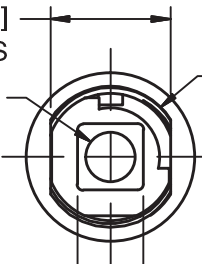
$\varnothing 1/4 - 28$

[6.35 - .907]

CAM MOUNT
SCREW THREADS

SCREW MOUNTED
CAM

.95 [24.13]



M19 X 1.00mm
BARREL THREADS

$.346^{+0.000}_{-0.003}$ [8.79 $^{+0.00}_{-0.08}$]
SQ. CAM BOSS

THIS DRAWING IS THE EXCLUSIVE PROPERTY OF THE ILLINOIS LOCK COMPANY / CCL SECURITY PRODUCTS, AND IS SUBMITTED ONLY ON A CONFIDENTIAL BASIS. UNAUTHORIZED USE OR DISCLOSURE OF ITS CONTENTS AND REPRODUCTION IS PROHIBITED. THIS DRAWING, UNLESS OTHERWISE DIRECTED IS TO BE RETURNED TO THE ILLINOIS LOCK COMPANY / CCL SECURITY PRODUCTS.

Illinois Lock Company

CCL SECURITY PRODUCTS

WHEELING, IL.

MATERIAL: ZINC, STEEL, BRASS

TOLERANCES, UNLESS OTHERWISE SPECIFIED

VALUE	INCHES [mm]
X	$\pm .030$ [.762]
X.X	$\pm .015$ [.381]
X.XX	$\pm .010$ [.254]
X.XXX	$\pm .005$ [.127]
FRACTIONS: $\pm 1/32$	ANGLES: $\pm 2^\circ$

FINISH SPECS: STANDARD - US26: BRIGHT CHROME

X

ENG: JAI

SCALE: 1 : 1

X.XX

CHECKED BY:

DATE: 2/11/2015

X.XXX

FRACTIONS: $\pm 1/32$ ANGLES: $\pm 2^\circ$

CUST. NAME:

DC650S

CUST. PART NO:

SHEET: 10 OF 10