

PROJ. NO:

DESTROY ALL PRINTS PREVIOUS TO

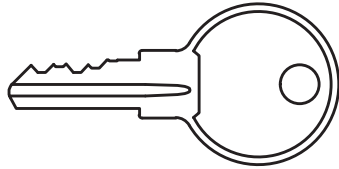
PART NO:

DC650M

REV.
NO.

3/11/2015

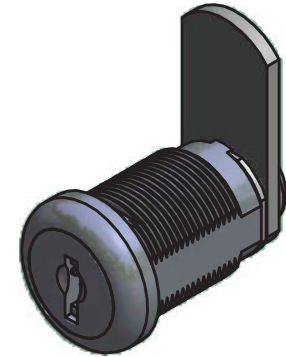
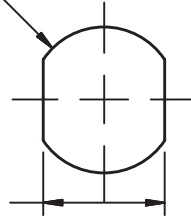
LOCK COMES STANDARD WITH TWO
NICKEL-PLATED BRASS KEYS
ILC KEYBLANK = C610-KEYBLANKS



RECOMMENDED APPLICATION HOLE SIZE

$\varnothing .760 \pm 0.002$ [19.30 ± 0.05]

$.633^{+0.003}_{-0.000}$ [16.08 $^{+0.08}_{-0.00}$]



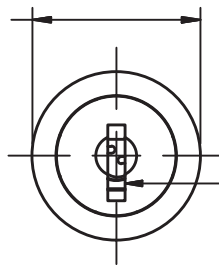
US26: BRIGHT CHROME
BLACK E-COAT (OPTIONAL)
US15: BRIGHT NICKEL (OPTIONAL)

DIMENSION FROM BACK
OF LOCK HEAD TO FORMED CAM FACE
VARIES BY CAM OFFSET DIMENSION

$.875^{+0.040}_{-0.000}$ [22.23 $^{+1.02}_{-0.00}$]

DIMENSION TO STRAIGHT
CAM FACE

$\varnothing .88$ [22.23]



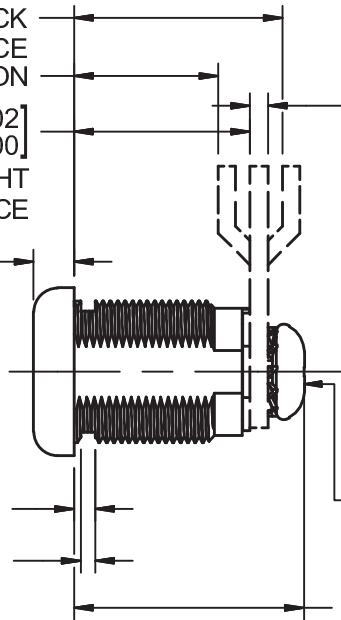
ILC 163B
KEYWAY

$.20$ [5.08]

$.110 \pm 0.005$ [2.80 ± 0.13]

$.075 \pm 0.005$ [1.90 ± 0.13]

STANDARD CLIP ILCPN: HS6397
WILL FIT STANDARD GAUGE APPLICATIONS
.025" [.64] TO .05" [1.27] THICK



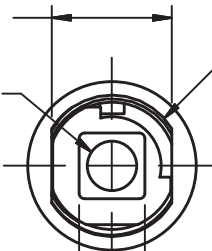
$.090 \pm 0.005$ [2.29 ± 0.13]
STANDARD MEDIUM-DUTY
CAM

$.625 \pm 0.003$ [15.88 ± 0.08]
BARREL FLATS

$\varnothing 1/4 - 28$
[6.35-.907]
CAM MOUNT
SCREW THREADS

SCREW MOUNTED
CAM

1.20 [30.48]



M19 X 1.00mm
BARREL THREADS

$.346^{+0.000}_{-0.003}$ [8.79 $^{+0.00}_{-0.08}$]

SQ. CAM BOSS

THIS DRAWING IS THE EXCLUSIVE PROPERTY OF THE ILLINOIS LOCK COMPANY / CCL SECURITY PRODUCTS, AND IS SUBMITTED ONLY ON A CONFIDENTIAL BASIS. UNAUTHORIZED USE OR DISCLOSURE OF ITS CONTENTS AND REPRODUCTION IS PROHIBITED. THIS DRAWING, UNLESS OTHERWISE DIRECTED IS TO BE RETURNED TO THE ILLINOIS LOCK COMPANY / CCL SECURITY PRODUCTS.

Illinois Lock Company

CCL SECURITY PRODUCTS

WHEELING, IL.

MATERIAL: ZINC, STEEL, BRASS

TOLERANCES, UNLESS OTHERWISE SPECIFIED

| VALUE | INCHES [mm] |
|-------------------|---------------|
| X | ± .030 [.762] |
| X.X | ± .015 [.381] |
| X.XX | ± .010 [.254] |
| X.XXX | ± .005 [.127] |
| FRACTIONS: ± 1/32 | ANGLES: ± 2° |

FINISH SPECS: STANDARD - US26: BRIGHT CHROME

X

ENG: JAI

SCALE: 1 : 1

X.X

CHECKED BY:

DATE: 2/11/2015

X.XX

FRACTIONS: ± 1/32 ANGLES: ± 2°

Illinois Lock Company

CCL SECURITY PRODUCTS

WHEELING, IL.

DC650M

CUST. NAME:

CUST. PART NO:

SHEET: 9 OF 10